

# *Sheldon Speyer Platinum*

C O L L E C T I O N S





067BG



445

849

**067BG** - 0.30CT FRENCH CUT DIAMOND  
**445** - 0.20CT RUBY & 0.05CT DIAMOND  
**849** - 0.70CT T.W. DIAMOND

880



877

876

**880** - 0.30CT FRENCH CUT DIAMOND  
**877** - 0.35CT FRENCH CUT SAPP & 0.13CT FRENCH CUT DIAMOND  
**876** - 0.25CT FRENCH CUT DIAMOND & 0.20CT



## Sheldon Speyer Platinum

*Beauty Shining Through Eternity*



956

959

963



950 Wedding band set featured on page 6

950



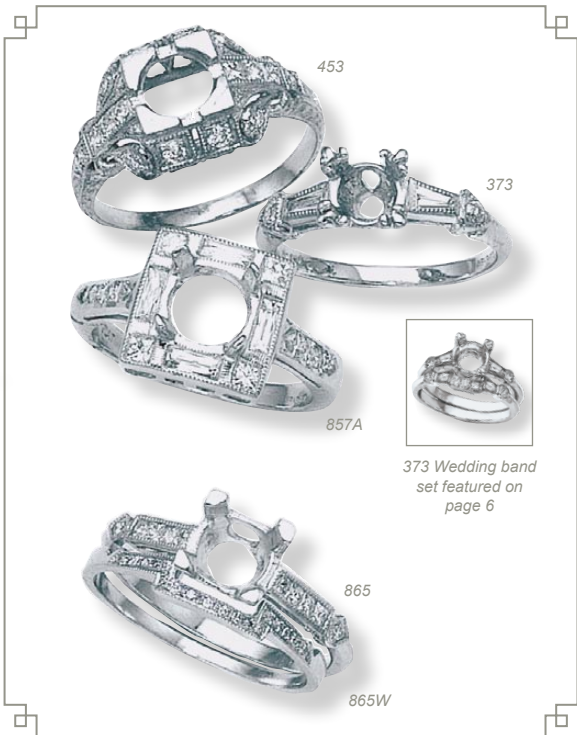
874

900

**956** - 0.30CT T.W. FRENCH CUT & ROUND DIAMOND  
**959** - 0.20CT T.W. FRENCH CUT & ROUND DIAMOND  
**963** - 0.30CT T.W. FRENCH CUT & ROUND DIAMOND

**950** - 0.25CT MARQUIS DIAMOND  
**874** - 0.13CT FRENCH CUT DIAMOND & 0.03CT DIAMOND  
**900** - 0.22CT FRENCH CUT SAPPHIRE & 0.35CT FRENCH CUT DIAMOND

*All designs available in a variety of stone colors, mountings available for various center stone fitments*



453

373

857A

865

865W

373 Wedding band set featured on page 6

**876A** - 0.25CT FRENCH CUT DIAMOND & 0.20CT DIAMOND  
**465** - 0.35CT FRENCH CUT DIAMOND & 0.32CT DIAMOND  
**898** - 0.30CT FRENCH CUT DIAMOND & 0.03CT DIAMOND



876A Wedding band set featured on page 5

876A

465

898

**453** - .35CT FRENCH CUT DIAMOND  
**373** - 0.10CT FRENCH CUT DIAMOND & 0.03CT DIAMOND  
**857A** - 0.65CT T.W. FRENCH CUT DIAMOND  
**884** - 0.20CT FRENCH CUT RUBY & 0.09CT FRENCH CUT DIAMOND  
**863** - 0.28CT FRENCH CUT DIAMOND

**892E** - 0.27CT T.W. FRENCH CUT DIAMOND  
**892W** - WEDDING BAND  
**904** - 0.24CT FRENCH CUT DIAMOND  
**904W** - 0.24CT FRENCH CUT DIAMOND



040

040W

**040** - 0.30CT FRENCH CUT SAPPHIRE & 0.32CT DIAMOND  
**040W** - WEDDING BAND



892E

892W

904

904W

**906** - 0.07CT SAPPHIRE & 0.09CT DIAMOND  
**858** - 0.21CT SAPPHIRE & 0.20CT DIAMOND  
**663** - 0.20CT SAPPHIRE & 0.20CT DIAMOND



**407** - 0.21CT DIAMOND  
**422** - 0.20CT DIAMOND  
**334S** - 0.46CT DIAMOND



 *Sheldon Speyer Platinum*  
*Beauty Shining Through Eternity*



**073** - 0.15CT SAPPHIRE & 0.10CT DIAMOND  
**843** - 0.25CT SAPPHIRE & 0.08CT DIAMOND  
**962** - 0.25CT SAPPHIRE & 0.26CT DIAMOND



**078** - 0.50CT DIAMOND  
**408** - 0.10CT DIAMOND  
**2000** - 0.17CT DIAMOND



**903** - 0.33CT FRENCH CUT DIAMOND & 0.09CT ROUND DIAMOND  
**899** - 0.12CT FRENCH CUT DIAMOND & 0.10CT ROUND DIAMOND  
**822** - 0.50CT DIAMOND



**697** - 0.20CT DIAMOND  
**856** - 0.32CT EMERALD & 0.50CT FRENCH CUT DIAMOND  
**851** - DIAMOND

**855** - 0.70CT FRENCH CUT DIAMOND, SHOWN WITH 1.5CT CENTER DIAMOND - MATCHING WEDDING BAND AVAILABLE  
**685** - 0.65CT DIAMOND "DISH", SHOWN WITH 3.40CT CENTER OVAL SAPPHIRE  
**953** - 0.35CT DIAMOND, SHOWN WITH 2.50CT CENTER SAPPHIRE



**855C** - 0.25CT SAPPHIRE & 0.70CT FRENCH CUT DIAMOND - MATCHING WEDDING BAND AVAILABLE  
**842B** - 0.25CT FRENCH CUT SAPPHIRE & 0.15CT DIAMOND  
**465** - 0.40CT SAPPHIRE & 0.33CT DIAMOND



**825M** - 0.60CT T.W. FRENCH CUT DIAMOND & DIAMOND,  
SHOWN WITH 1.50CT MARQUIS CENTER DIAMOND

**863** - 0.69CT FRENCH CUT DIAMOND, SHOWN WITH 4.31CT CENTER SAPPHIRE

**997** - 0.25CT FRENCH CUT SAPPHIRE & 0.15CT DIAMOND - SHOWN WITH 1.50CT CENTER DIAMOND

**694** - 0.12CT DIAMOND

**421** - 0.15CT DIAMOND

**483** - 0.10CT DIAMOND



825M



863



694



997



421

483



*Beauty Shining Through Eternity*

**846** - 0.50CT SAPPHIRE & 0.40CT DIAMOND

**038** - FRENCH CUT SAPPHIRE & DIAMOND

**966W**- WEDDING BAND

**876W**- WEDDING BAND

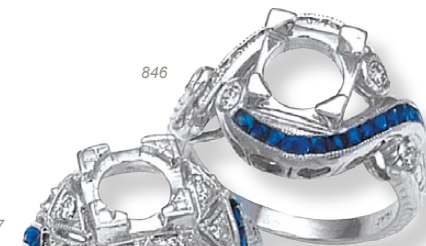
**867** - 0.27CT SAPPHIRE & 0.11CT DIAMOND

**966** - 0.65CT DIAMOND

**876A** - .25CT FRENCH CUT DIAMOND & 0.20CT DIAMOND

**908** - .35CT FRENCH CUT DIAMOND

**908W**- WEDDING BAND



846

867



966

966W



038



908

908W



876A

876W



826  
980W

875  
465W

406N  
837W

**826** - 0.20CT DIAMOND  
**875** - 0.15CD DIAMOND  
**406N** - 0.30CT DIAMOND

**980W** - WEDDING BAND  
**465W** - WEDDING BAND  
**837W** - WEDDING BAND



002

965

989

**002** - 0.14CT DIAMOND #965 - 0.25CT DIAMOND  
**989** - 0.60CT T.W. FANCY CUT DIAMOND & DIAMOND - SHOWN WITH 1.0CT CENTER DIAMOND

**857L** - 1.0CT FRENCH CUT DIAMOND - SHOWN WITH 2.50CT PRINCESS CUT CENTER  
**373B** - 0.10CT FRENCH CUT DIAMOND & 0.03CT DIAMOND  
**373W** - WEDDING BAND #950 - 0.27CT DIAMOND  
**950W** - WEDDING BAND

Sheldon  Speyer

**841** - 0.60CT DIAMOND  
**994** - 0.40CT FRENCH CUT DIAMOND & 0.10CT DIAMOND  
**955** - 0.55CT FRENCH CUT SAPPHIRE & 0.12CT DIAMOND



841

994

955

857L



373B

373W

950

950W





- 855B** - 0.41CT FRENCH CUT RUBY & 0.41CT FRENCH CUT DIAMOND, AVAILABLE TO FIT 1CT, 1.5CT & 2CT CENTER  
**467** - 0.20CT FANCY CUT SAPPHIRE & 0.20CT DIAMOND, ALSO AVAILABLE WITH FRENCH CUT STONES TO REPLACE FANCY CUTS  
**855** - 0.75CT T.W. FRENCH CUT DIAMOND & DIAMOND, AVAILABLE TO FIT 1CT, 1.5CT AND 2CT CENTER



855B



467



855

- 885** - 0.32CT FRENCH CUT DIAMOND  
**865** - 0.18CT DIAMOND  
**865W** - WEDDING BAND



884



863



885

- 842** - 0.35CT T.W. FRENCH CUT DIAMOND AND DIAMOND  
**975** - 0.20CT DIAMOND, SHOWN WITH 1.0CT CENTER DIAMOND  
**878** - 0.13CT FRENCH CUT SAPPHIRE & 0.05CT DIAMOND

842



975



878



- 888B** - 0.50CT FRENCH CUT DIAMOND, SHOWN WITH 2.50CT CENTER DIAMOND  
**407E** - 0.15CT DIAMOND, SHOWN WITH 1.04CT CENTER PRINCESS CUT DIAMOND  
**986** - 0.25CT DIAMOND, SHOWN WITH 1.50CT CENTER DIAMOND

888B



407E



986





## MINI MANIA

Our unique collection of delicious ultra-dainty, itty-bitty stackable Micro-Bands. The perfect guard ring, toe ring or multiple-stacked all-purpose fashion accessory!



PAVE SET 050 SERIES AVAILABLE IN PLATINUM OR 18K YELLOW GOLD WITH DIAMONDS.

CHANNEL SET 055 SERIES AVAILABLE IN PLATINUM, 18K YELLOW OR 14K PINK GOLD WITH CHOICE OF WHITE DIAMONDS, NATURAL PINK DIAMONDS, NATURAL YELLOW DIAMONDS, BLUE DIAMONDS, BLACK DIAMONDS, BLUE SAPPHIRES, YELLOW SAPPHIRES, PINK SAPPHIRES, ORANGE SAPPHIRES, RUBIES, TSAVORITES, GARNETS AND AMETHYSTS

ALL AVAILABLE WITH OR WITHOUT HAND ENGRAVING



### **MIXED LINK NECKLACES**

AVAILABLE IN FASCINATING AND STUNNING COMBINATIONS OF COLORS AND SHAPES, THESE BEAUTIFUL 18K GOLD NECKLACES ARE SURE TO PLEASE THE MOST DISCRIMINATING AND SOPHISTICATED TASTES. THE PERFECT ACCENT FOR TODAY'S ACTIVE FASHIONS!

CHOOSE COMBINATIONS OF WHITE SAPPHIRE, PASTEL BLUE SAPPHIRE, DARK BLUE SAPPHIRE, LIGHT GREEN SAPPHIRE, YELLOW SAPPHIRE, ORANGE SAPPHIRE, BLACK SAPPHIRE, PINK SAPPHIRE, RUBY, AQUAMARINE, BLUE TOPAZ, AMETHYST GARNETS OR ANY MIXTURE OF THE ABOVE. HAND CRAFTED IN BEAUTIFUL 18K WHITE, YELLOW OR PINK GOLDS.

### **EARRINGS**

AVAILABLE IN A LARGE SELECTION OF NECKLACE-MATCHING DESIGNS!

*All designs available in a variety of stone colors, mountings available for various center stone fitments*



800

729

602

**800** - 0.11CT SAPPHIRE & 0.09CT DIAMOND  
- ALSO AVAILABLE IN ALL DIAMOND OR  
COLOR & DIAMOND COMBINATIONS

**729** - 0.35CT DIAMOND

**602** - 0.95CT PAVE SET DIAMOND



726

722

720

725

**726** - 0.25CT DIAMOND

**722** - 0.25CT DIAMOND

**720** - 0.20CT DIAMOND

**725** - 0.25CT DIAMOND



**050** - 0.20CT PAVE SET DIAMOND, SHOWN WITH  
POLISHED SIDES (P), ENGRAVED SIDES  
ALSO AVAILABLE - SEE FACING PAGE

**540** - 0.40CT DIAMOND, SHOWN WITH  
POLISHED SIDES (P), ENGRAVED SIDES  
STANDARD

**560** - 0.75CT DIAMOND, SHOWN WITH  
POLISHED SIDES (P), ENGRAVED SIDES  
STANDARD



050(P)

540(P)

560(P)

**500** - 0.50CT FRENCH CUT SAPPHIRE & 0.35CT  
FRENCH CUT DIAMOND

**500** - 0.50CT PRINCESS CUT RUBY & 0.35CT  
FRENCH CUT DIAMOND



500

500



**523** - 2.50CT FRENCH CUT DIAMOND  
**543** - 0.90CT FRENCH CUT DIAMOND  
**563** - 1.20 CT FRENCH CUT DIAMOND

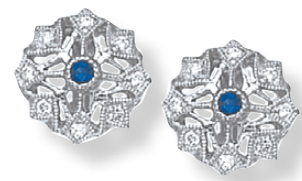


**540** - 0.40CT NATURAL PINK DIAMOND  
**540** - 0.40CT T.W. SAPPHIRE & DIAMOND - AVAILABLE IN A LARGE VARIETY OF STONE & COLOR COMBINATIONS  
**560** - 0.75CT RUBY & DIAMOND - AVAILABLE IN A LARGE VARIETY OF STONE & COLOR COMBINATIONS



SNUGGIE

**SNUGGIE** - 0.50CT T.W. SAPPHIRE & DIAMOND - AVAILABLE IN A LARGE VARIETY OF STONE & COLOR COMBINATIONS



SNOWFLAKE

**SNOWFLAKE** - SAPPHIRE & DIAMOND - ALSO AVAILABLE IN ALL DIAMOND, RUBY / DIAMOND AND EMERALD / DIAMOND COMBINATIONS

**487** - 1.0CT FRENCH CUT DIAMOND & 1.0CT FRENCH CUT SAPPHIRE WITH 0.40CT PAVE SET DIAMOND - ALSO AVAILABLE IN SAPPHIRE / RUBY & DIAMOND COMBINATION



487 FLIP

**546** - 0.40CT SAPPHIRE & 0.30CT PAVE SET DIAMOND  
**546** - 0.30CT EMERALD & 0.30CT PAVE SET DIAMOND - ALSO AVAILABLE IN RUBY & DIAMOND COMBINATION  
**546** - 0.70CT T.W. DIAMOND & PAVE SET DIAMOND





738

738

547



520



544



780

**738** - 0.65CT FRENCH CUT DIAMOND & 0.21CT DIAMOND

**547** - 0.30CT RUBY & 0.30 DIAMOND

**544** - 0.75CT FRENCH CUT BAGUETTE DIAMOND

**780(S)** - 0.35CT T.W. FRENCH CUT BAGUETTE DIAMOND & ROUND DIAMOND

**545** - 0.40CT SAPPHIRE & 0.35CT DIAMOND

**545** - 0.70CT T.W. DIAMOND

**397** - 1.0CT FRENCH CUT SAPPHIRE & 0.35CT DIAMOND

**738** - 0.80CT FRENCH CUT SAPPHIRE & 0.21CT DIAMOND

**520** - 1.80CT T.W. SAPPHIRE & DIAMOND

**545** - 0.30 EMERALD & 0.35CT DIAMOND

**497** - 0.75 FRENCH CUT SAPPHIRE & 0.25CT DIAMOND

**397** - 1.0CT FRENCH CUT RUBY & 0.35CT DIAMOND



*Sheldon Speyer Platinum*

*Beauty Shining Through Eternity*



545

545

545



497

397

397

**704** - 0.75CT SAPPHIRE & 0.20CT DIAMOND  
**704** - 0.45CT DIAMOND & 0.20CT DIAMOND

**701** - 0.60CT T.W. FRENCH CUT RUBY & ROUND DIAMOND  
**701** - 0.60CT T.W. FRENCH CUT SAPPHIRE & ROUND DIAMOND

**700** - 0.75CT FRENCH CUT SAPPHIRE & 0.20CT DIAMOND  
**700** - 0.85CT T.W. FRENCH CUT DIAMOND & ROUND DIAMOND

**728** - 0.55CT T.W. FRENCH CUT DIAMOND & ROUND DIAMOND  
**728** - 0.40CT FRENCH CUT RUBY & 0.15CT DIAMOND

**704** - 0.75CT SAPPHIRE & 0.20CT DIAMOND  
**704** - 0.45CT YELLOW DIAMOND & 0.20CT DIAMOND

**701** - 0.50CT T.W. FRENCH CUT DIAMOND & ROUND DIAMOND

**700** - 0.75CT FRENCH CUT RUBY & 0.20CT DIAMOND

**728** - 0.40CT FRENCH CUT SAPPHIRE & 0.15CT DIAMOND



**540(A)** - 0.40CT T.W. TREATED BLACK DIAMOND & WHITE DIAMOND  
**540(B)** - 0.40CT T.W. BLUE SAPPHIRE & WHITE DIAMOND  
**540(E)** - 0.40CT T.W. TREATED BLUE DIAMOND & WHITE DIAMOND

**540(F)** - 0.40CT T.W. TREATED BLUE DIAMOND & WHITE DIAMOND  
**540(H)** - 0.40CT T.W. TREATED GREEN DIAMOND & WHITE DIAMOND

**540(C)** - 0.40CT T.W. RUBY & WHITE DIAMOND  
**540(D)** - 0.40CT NATURAL GOLDEN DIAMOND

**540(G)** - 0.40CT RUBY



 *Sheldon Speyer Platinum*



**540** - 0.40CT DIAMOND  
**737** - 0.35CT DIAMOND

**601** - 0.75CT DIAMOND  
**492** - 1.50CT DIAMOND

**098** - 0.50CT PAVE SET DIAMOND

**600** - 1.25CT DIAMOND





525

561

524



560

590

520

**561** - 1.0CT PRINCESS CUT DIAMOND  
**525** - 2.25CT T.W. FRENCH CUT BAGUETTE DIAMOND & FRENCH CUT DIAMOND  
**524** - 2.50CT T.W. PAVE SET DIAMOND  
**590** - 2.75CT DIAMOND  
**560** - 0.75CT DIAMOND  
**520** - 1.75CT DIAMOND  
**520** - 2.50CT FRENCH CUT SAPPHIRE  
**497** - 0.75CT FRENCH CUT RUBY & 0.25CT DIAMOND  
**727** - 0.35CT FRENCH CUT SAPPHIRE & 0.25CT DIAMOND  
**738** - 0.70CT FRENCH CUT RUBY & 0.20CT DIAMOND



520

497

727

738





*Sheldon Speyer Platinum*

NEW YORK, U.S.A.

(212) 354-3206 FAX: (212) 354-4375

[HTTP://WWW.SHELDONSPEYERPLATINUM.COM](http://WWW.SHELDONSPEYERPLATINUM.COM)

EMAIL: [S.SPEYER@VERIZON.NET](mailto:S.SPEYER@VERIZON.NET)